



Science Based Targets

Lisa Simon, WWF Österreich

17. Dezember 2019



CLIMATE GROUP

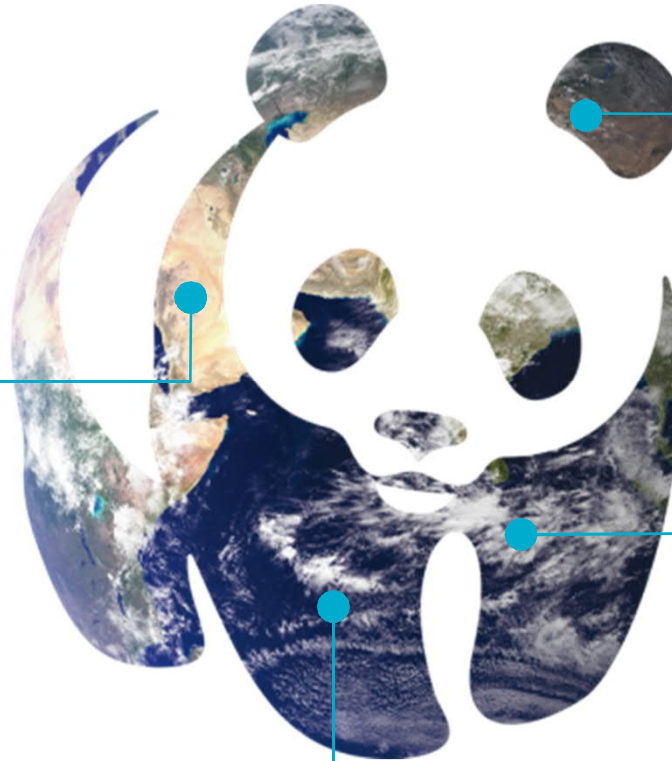
UNTERNEHMEN FÜR
WIRKSAMEN KLIMASCHUTZ

+ 100

Der WWF ist in über 100
Ländern weltweit aktiv

1961

Der WWF wurde 1961 gegründet



+6.000

Mehr als 6.000 Menschen
arbeiten für den WWF

+ 5 Mio.

Über 5 Millionen
Menschen unterstützen
die Arbeit des WWF



CLIMATE GROUP

UNTERNEHMEN FÜR
WIRKSAMEN KLIMASCHUTZ

WWF Umwelt & Wirtschaft

Themenschwerpunkte in Österreich

Klima &
Energie



Nachhaltige
Ernährung

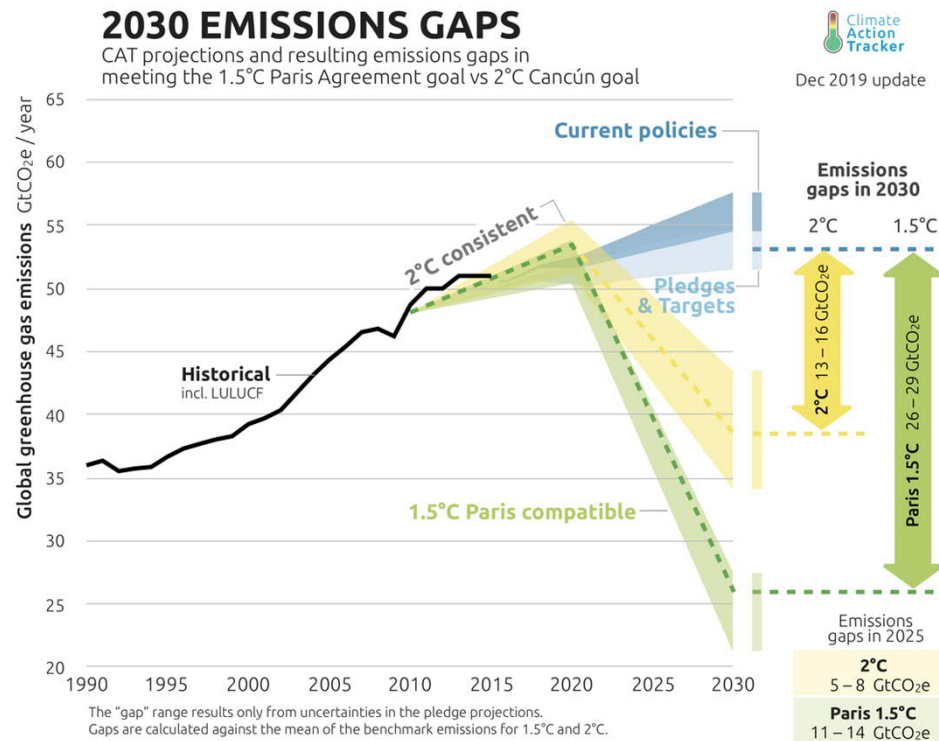


Nachhaltiger
Finanzmarkt



Was ist ein Science Based Target (SBT)?

Targets adopted by companies to reduce GHG emissions are considered “science-based” if they are in line with the level of decarbonization required to keep global temperature increase below 2°C compared to pre-industrial temperatures.



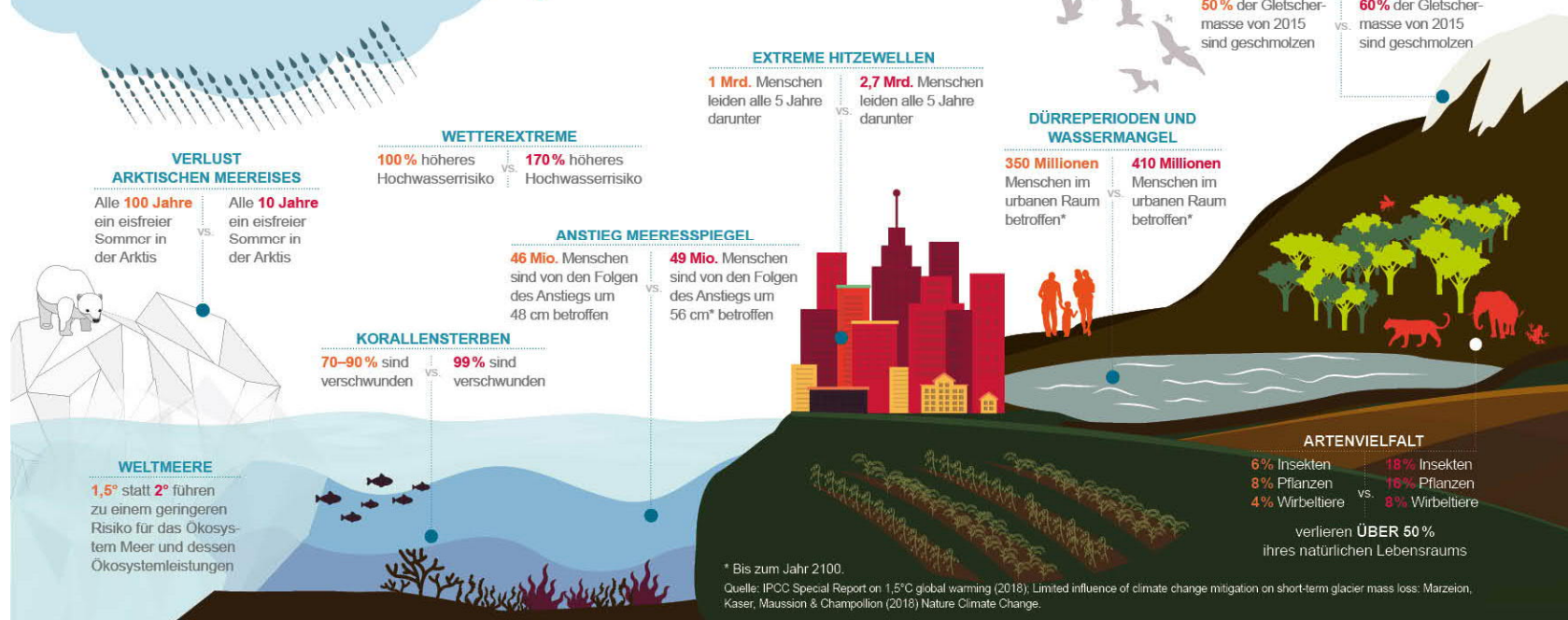


CLIMATE GROUP

UNTERNEHMEN FÜR WIRKSAMEN KLIMASCHUTZ

Warum SBTs setzen – was wenn nicht?

Globale Klimarisiken: 1,5° vs. 2° Erwärmung



Volkswirtschaftliche Schäden von +2°C

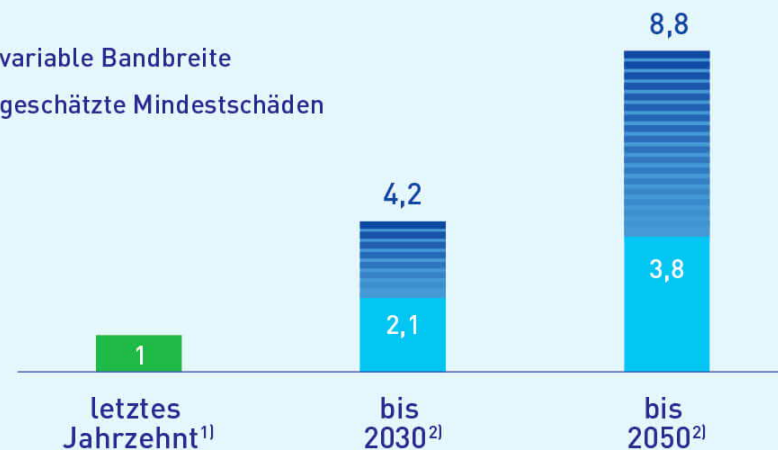
8,8 Mrd. €/Jahr bis 2050

Studie „COIN - Cost of Inaction: Assessing the Costs of Climate Change for Austria“

Gesamtjährliche Schäden in Österreich durch Klimawandel, in Mrd.€



■ variable Bandbreite
■ geschätzte Mindestschäden



1) Nur große Naturkatastrophen der Kategorie 5 und 6 auf 6-teiliger Skala der Münchner Rück aus den Jahren 2001–2010 berücksichtigt

2) Mögl. Bandbreite ökonom. Schäden globaler Erwärmung von 2°C bis 2050

Auftraggeber: Klima- und Energiefonds; Quelle: COIN

APA-AUFTRAGSGRAFIK

Global Risk Report

1	Extreme weather events (e.g. floods, storms, etc.)	
	Failure of climate-change mitigation and adaptation	2
3	Major natural disasters (e.g. earthquake, tsunami, volcanic eruption, geomagnetic storms)	
	Massive incident of data fraud/theft	4
5	Large-scale cyberattacks	
	Man-made environmental damage and disasters (e.g. oil spills, radioactive contamination, etc.)	6
7	Large-scale involuntary migration	
	Major biodiversity loss and ecosystem collapse (terrestrial or marine)	8
9	Water crises	
	Asset bubbles in a major economy	10

Top
10
Risks by
Likelihood
Global Risks Report



CLIMATE GROUP

UNTERNEHMEN FÜR
WIRKSAMEN KLIMASCHUTZ

Vorteile für Unternehmen durch SBTs



OF COMPANY EXECS HAVE SEEN
BRAND REPUTATION BOOSTED
BY SCIENCE-BASED TARGETS



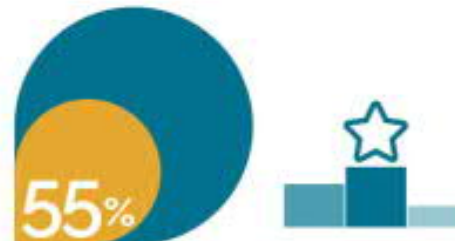
OF COMPANY EXECS HAVE SEEN
INVESTOR CONFIDENCE BOOSTED
BY SCIENCE-BASED TARGETS



OF COMPANY EXECS HAVE
INCREASED REGULATORY RESILIENCE
THANKS TO SCIENCE-BASED TARGETS



OF COMPANY EXECS SAY
SCIENCE-BASED TARGETS
DRIVE INNOVATION



OF COMPANY EXECS HAVE
GAINED COMPETITIVE ADVANTAGE
FROM SCIENCE-BASED TARGETS



OF COMPANY EXECS HAVE SEEN
BOTTOM LINE SAVINGS
FROM SCIENCE-BASED TARGETS



Science Based Targets Initiative

<https://sciencebasedtargets.org/>



753 Unternehmen unterstützen die Initiative

315 Unternehmen haben sich SBTs gesetzt

Schritt für Schritt zum Klimaschutzvorreiter



1

Commit



2

Develop



3

Submit



4

Announce

SBT Kriterien



Boundary

All company-wide Scope 1 and Scope 2 GHG emissions must be covered



Timeframe

5-15 years into the future



Level of ambition *

At a minimum - consistent with the level of decarbonization required to keep temperature increase to well below 2°C while we encourage efforts towards 1.5°C



Reporting

Disclose GHG emissions inventory on an annual basis



Absolute vs. intensity

Intensity targets are only eligible when they lead to absolute emission reductions or when they are based on an approved sector pathway or method (e.g. the SDA)



Scope 3 *

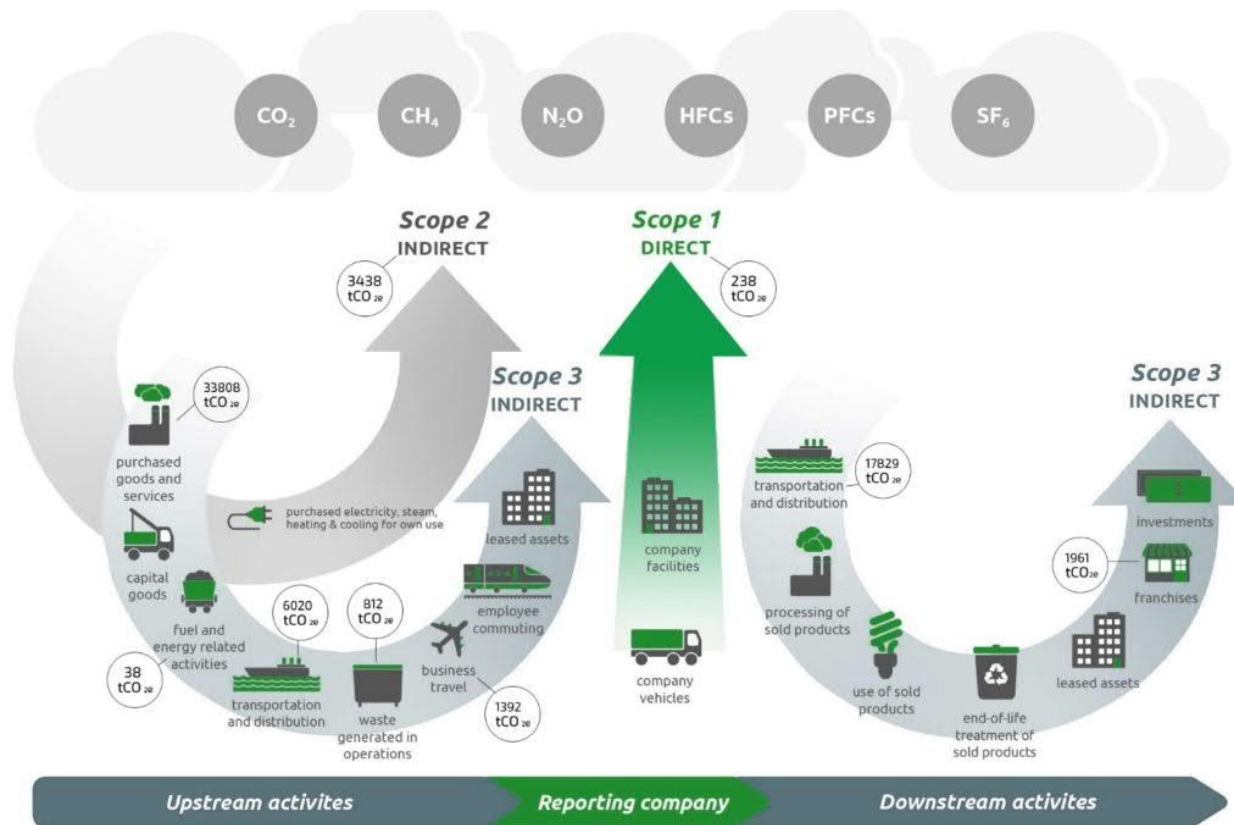
A scope 3 screening is required. An ambitious and measureable Scope 3 target is required when Scope 3 emissions cover more than 40% of total emissions.



CLIMATE GROUP

UNTERNEHMEN FÜR
WIRKSAMEN KLIMASCHUTZ

Direkte und indirekte THG-Emissionen

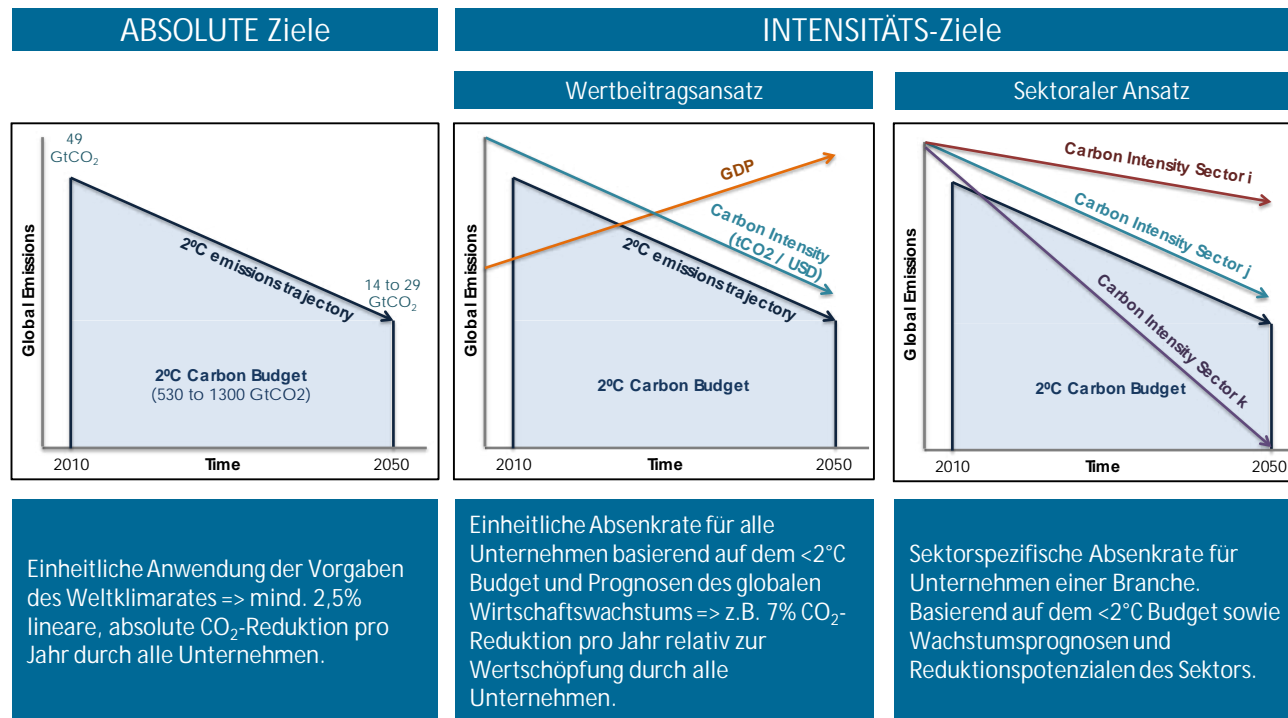




CLIMATE GROUP

UNTERNEHMEN FÜR
WIRKSAMEN KLIMASCHUTZ

Methodenübersicht





SBT Ambitionsschwellen

Long-term temperature goal	Ambition range (global emissions pathway)	Ambition range (sector emissions pathway)
2°C Approx. 50% chance of limiting warming in 2100 to below 2°C	$1.23\% \leq X < 2.5\%$ annual linear reduction rate over target period	$SDA\ 2DS\ pathway \leq X < SDA\ B2DS\ pathway$
Well below 2°C Approx. 66% chance of limiting peak warming between present and 2100 to below 2°C	$2.5\% \leq X < 4.2\%$ annual linear reduction rate over target period	$X \geq SDA\ B2DS\ pathway$
1.5°C Approx. 50% chance of limiting peak warming between present and 2100 to below 1.5°C	$X \geq 4.2\%$ annual linear reduction rate over target period	N/A



Materialien der SBT-Initiative

<https://sciencebasedtargets.org/resources>

- science-based target setting tool
- science-based target setting manual
- SBTi criteria
- target validation protocol
- foundations of science-based target setting
- discussion paper: Towards a science-based approach to climate neutrality in the corporate sector



CLIMATE GROUP

UNTERNEHMEN FÜR
WIRKSAMEN KLIMASCHUTZ

SBT tool



SCIENCE
BASED
TARGETS

Science-based Target Setting Tool

Version: Version 1.1
Support: info@sciencebasedtargets.org

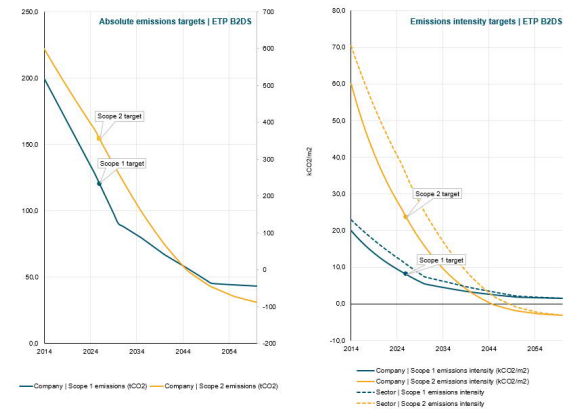
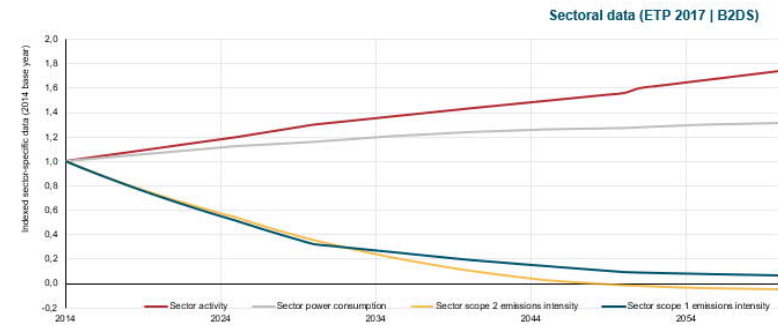
Section 1. Input data

Target setting method	Sectoral Decarbonization Approach	
SDA scenario	ETP B2DS	<i>(only B2DS is currently available for SDA)</i>
SDA sector	Services - Buildings	<i>Dropdown</i>
Base year	2014	<i>Dropdown</i>
Target year	2026	<i>Dropdown</i>
Projected output measure	Target year output (Linear)	<i>Dropdown</i>
Base year output	10 000	<i>Square meters</i>
Target year output (Linear)	15 000	<i>Square meters</i>
Scope 1 emissions	200	<i>tCO2e (S1 intensity: 20 kCO2/m2)</i>
Scope 2 emissions	600	<i>tCO2e (S2 intensity: 60 kCO2/m2)</i>

IEA ETP B2DS scenario

[Review all target modelling data](#)

	Base year (2014)	Target year (2026)	% Reduction
Company Scope 1 emissions (tCO2)	200,0	120,2	39,9%
Company Scope 2 emissions (tCO2)	600,0	354,2	41,0%
Company Scope 1+2 emissions (tCO2)	800,0	474,4	40,7%
Company Scope 1 emissions intensity (kCO2/m2)	20,0	8,0	59,9%
Company Scope 2 emissions intensity (kCO2/m2)	60,0	23,6	60,6%
Company Scope 1+2 emissions intensity (kCO2/m2)	80,0	27,2	66,0%





CLIMATE GROUP

UNTERNEHMEN FÜR
WIRKSAMEN KLIMASCHUTZ

Together possible!

Lisa Simon, Teamleitung Klimaschutz & Finanzmarkt, WWF Österreich

E-Mail: lisa.simon@wwf.at, Mobil: +43-676-83488215