



Responsible business and community engagement at BP

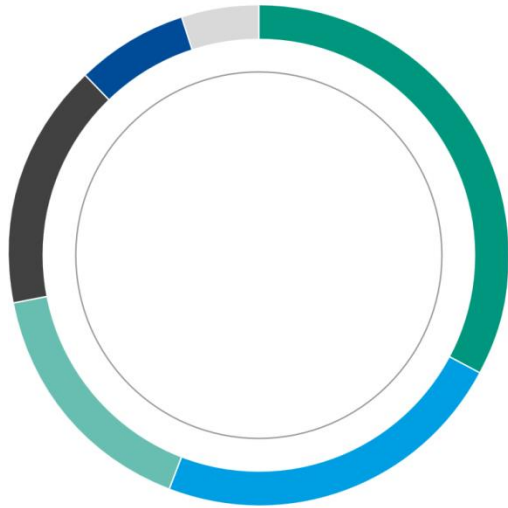
Ian Duffy, Advantage Austria presentation, 15 May 2018

The BP approach to responsible business and community engagement



- Our **core business creates social impact** through access to energy to power economic growth and lift people out of poverty.
- Responsible business includes how we on meet the dual challenge of more energy with fewer emissions, **respecting human needs and rights** wherever we operate.
- We work with governments, communities and non-governmental organizations to implement social investment programmes that can have a **sustainable beneficial impact**.
- We invest in community projects that **align with local needs and our business activities**. We consider how these projects support the UN Sustainable Development Goals.
- Typical themes of **economic development; education; environment; engagement**.
- Supported by appropriate **monitoring and evaluation**.

Financial impact of BP in the community in 2017 (\$ million)



● US and Canada	29.5
● Sub-Saharan Africa	20.5
● Middle East and North Africa	14.2
● Europe	14.1
● Asia Pacific	6.5
● South and Central America	4.7

UK employee contribution

Gifts and effort
\$2.35m

Volunteering hours 46,900

BP Foundation matching
\$1.75m

Total value to communities
\$4.1m

BP in the UK



See how **BP** is helping to secure **Britain's** energy future.



- **Connecting through arts and culture**
 - building a more inspired and creative society
- **Supporting STEM education**
 - inspiring young people into STEM careers
- **Building community capacity**
 - creating jobs in local communities through social enterprise
- **Sports partnerships**
 - promoting diversity and inclusion through support for Paralympic sport

Social impact achieved in the UK

Education

- **Schools Link** - 100 schools, approximately 250 work experience placements, mentors for individual students and groups of students
- **BP Educational Service** – 9,000 schools; 1.4 million students; teacher ratings: 90% engaging for students; 76% better understanding of STEM in everyday life; 75% engaging the disengaged
- **Project ENTHUSE** – 30,000+ teachers and technicians receiving CPD; every secondary school, 80% of primary; 160% increase in teacher retention
- **Enterprising Science** – new approaches developed for engaging students; taken to scale through Project ENTHUSE and Science Museum partnership

Enterprise

- Over 4,700 sustainable new jobs created since 2012 in London through 150 social enterprises, majority supported by BP employees
- £221m GVA, £20.7m saving to State, 48% jobs for disadvantaged individuals

Arts

- Since 1990, BP's investment has enabled over 50 million people to engage with BP activities, with more than 2 million in 2015 alone

Sports partnerships

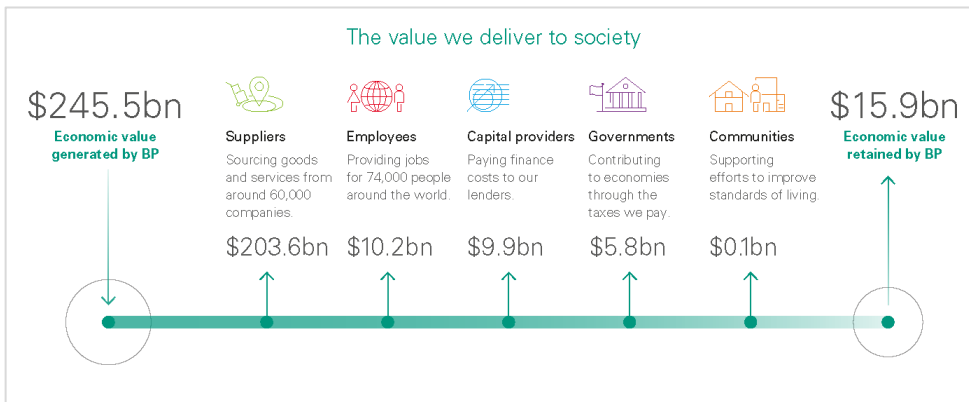
- Ten successful years of partnership with the British Paralympic Association (BPA), helping ParalympicsGB to compete at five Paralympic Games

Sustainability report 2017 – Value to society

- Powering economic growth
- Examples from around the world



US We employ around 14,000 people and support more than 100,000 jobs across our supply chain in the US.	UK We support one in every 260 jobs when you count our employees and those of our suppliers.	Egypt Together with our partners, we produce around 50% of gas consumed in the country.	Azerbaijan Our programmes have enabled local firms to secure contracts with BP worth in excess of \$530 million.	China We helped deliver around 38% of all the gas supplied to Guangdong, the most populated province in China.
Brazil Our biofuels sites produce enough renewable energy to power all the homes in a city of 1.3 million people.	Angola A total of 88% of our workforce in Angola are nationals.	India We are one of the largest foreign investors in India's growing energy sector.	Indonesia Gas from our Tangguh plant helps generate electricity for local communities, reducing their reliance on diesel.	



International community engagement examples

- [Austria](#) – Supporting Ronald McDonald Kinderhilfe since 2014
- [Egypt](#) – investing in programmes aimed at improving local economic development and important community services, such as health and education.
- [India](#) – focus on education, skills and safety
- [Indonesia](#) – providing access to cleaner energy, increasing local procurement, malaria prevention programmes, majority local employment
- [Iraq](#) – developing community forum to drive local community development and increase cohesion through health, infrastructure and education investments
- [Oman](#) – developing enterprise skills to diversify the economy
- [Trinidad & Tobago](#) – stimulating local enterprise, supporting education, increasing community cohesion and reducing crime

Questions?



- [bp.com/sustainability](https://www.bp.com/sustainability)
- [bp.com/uk/bpinthecommunity](https://www.bp.com/uk/bpinthecommunity)